

4-Channel Mini Controller



Features

- IP66 tough ABS enclosure
- Compatible with all lighting types
- Switched outputs rated 700W per channel
- Earth bonding metal chassis
- Operates wirelessly requires only a mains supply
- Rugged, separately fused outputs
- Fast, *Lid-On* programming
- Pulsed output option (for gate-trigger etc)

Part No. LS30540MINI

Description

The Lighting Control Module provides 4 wirelessly controllable channels each rated at 700W and suitable for all load types, including LEDs. It provides flexible control of non-dimmable lighting (or pumps) and is quickly configurable as a simple switch, group (zone) or scene controller, with 29 memories and a master on/off.

The separately fused outputs are fully protected against over current and over temperature. Large 10mm² input cable terminations, standard (20mm) gland cut-outs and an earth bonded gland-chassis simplify installation.

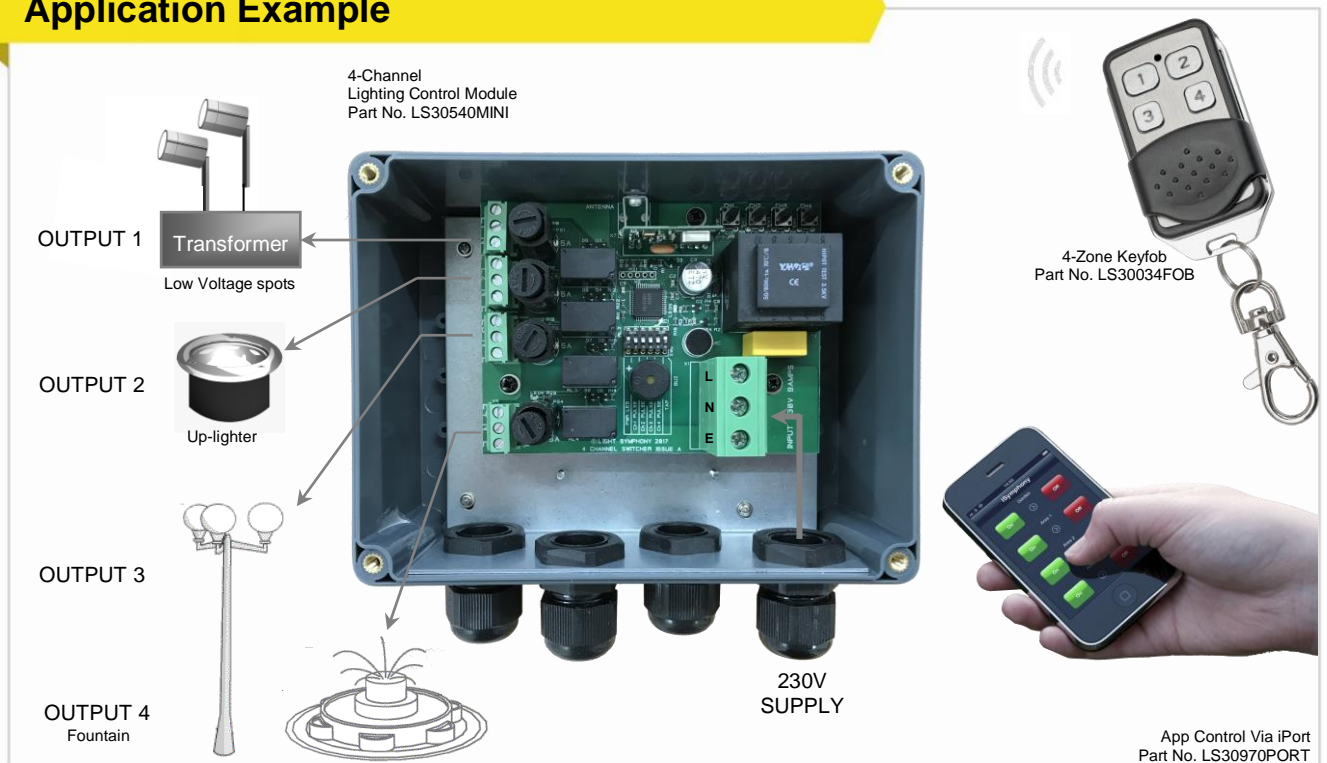
Lid-on programming speeds commissioning and reduces the risk of water ingress during installation.

Internal DIP switches allow outputs to be configured in 3 second PULSE mode, useful for triggering electric gates etc. Note all outputs are 230V so an isolation relay is usually required between the controller and gate.

Specification

Range	-	1000 metre wireless range line-of-site
Enclosure	-	IP66, UV stable, ABS with non-penetrating mounts translucent lid & neoprene o-ring. Colour RAL7011
RF	-	434.075MHz Narrow Band FM
Coding	-	Security channels 1–32
Power	-	Supply: 230VAC +/-10% 50Hz Standby <1W. Output 1-4 Relay rated 700W, zero-volt switching
Size	-	185 x 225 x 85mm
CE Compliance	-	EN 50081 – 1, To EN 50082 – 1

Application Example



How to use it

The Lighting Control Module (LCM) 'hears' wireless commands from any of Light Symphony's 1000metre controllers, such as the remote control or key-fob pictured above. The Garden On/Off button will switch all outputs together, providing a convenient master control. Outputs can also be separately assigned to 'Areas' (1-29), to provide individual or zoned control. Zones can be set using the 4 internal push buttons or by tapping on the lid.

Outputs are rated 700W each and are switching only (non-dimming).

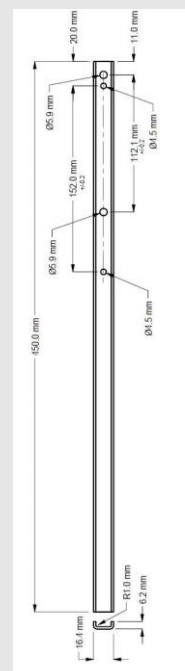
Internal DIP switches enable 'PULSE' output mode, which is useful for controlling electric gates etc.

Limitless controllers may be used together to create larger, flexible lighting zones or scenes.

Accessories

Mounting Spike Kit

A pair of adjustable-length, galvanised, steel spikes can be fitted to the Lighting Control Module in place of the supplied wall fixings to provide a convenient ground mounting method.



Part No. LS30010SPK